

TCF12 Antibody (N-term)
Affinity Purified Rabbit Polyclonal Antibody (Pab)
Catalog # AP14835a**Specification**

TCF12 Antibody (N-term) - Product Information

Application	WB,E
Primary Accession	O99081
Other Accession	P51514 , Q61286 , NP_996923.1 , NP_996919.1
Reactivity	Human
Predicted	Mouse, Rat
Host	Rabbit
Clonality	Polyclonal
Isotype	Rabbit IgG
Calculated MW	72965
Antigen Region	55-84

TCF12 Antibody (N-term) - Additional Information**Gene ID** 6938**Other Names**

Transcription factor 12, TCF-12, Class B basic helix-loop-helix protein 20, bHLHb20, DNA-binding protein HTF4, E-box-binding protein, Transcription factor HTF-4, TCF12, BHLHB20, HEB, HTF4

Target/Specificity

This TCF12 antibody is generated from rabbits immunized with a KLH conjugated synthetic peptide between 55-84 amino acids from the N-terminal region of human TCF12.

Dilution

WB~~1:1000

E~~Use at an assay dependent concentration.

Format

Purified polyclonal antibody supplied in PBS with 0.09% (W/V) sodium azide. This antibody is purified through a protein A column, followed by peptide affinity purification.

Storage

Maintain refrigerated at 2-8°C for up to 2 weeks. For long term storage store at -20°C in small aliquots to prevent freeze-thaw cycles.

Precautions

TCF12 Antibody (N-term) is for research use only and not for use in diagnostic or therapeutic procedures.

TCF12 Antibody (N-term) - Protein Information**Name** TCF12

Synonyms BHLHB20, HEB, HTF4

Function Transcriptional regulator. Involved in the initiation of neuronal differentiation. Activates transcription by binding to the E box (5'-CANNTG-3') (By similarity). May be involved in the functional network that regulates the development of the GnRH axis (PubMed:[32620954](#)).

Cellular Location

Nucleus.

Tissue Location

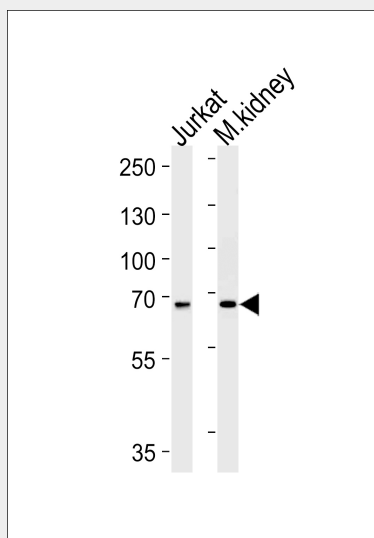
Expressed in several tissues and cell types including skeletal muscle, thymus, and a B-cell line

TCF12 Antibody (N-term) - Protocols

Provided below are standard protocols that you may find useful for product applications.

- [Western Blot](#)
- [Blocking Peptides](#)
- [Dot Blot](#)
- [Immunohistochemistry](#)
- [Immunofluorescence](#)
- [Immunoprecipitation](#)
- [Flow Cytometry](#)
- [Cell Culture](#)

TCF12 Antibody (N-term) - Images



TCF12 Antibody (N-term) (Cat.# AP14835a) western blot analysis in Jurkat cell line and mouse kidney lysates (35ug/lane). This demonstrates the TCF12 antibody detected the TCF12 protein (arrow).

TCF12 Antibody (N-term) - Background

The protein encoded by this gene is a member of the basic helix-loop-helix (bHLH) E-protein family that recognizes the consensus binding site (E-box) CANNTG. This encoded protein is expressed in many tissues, among them skeletal muscle, thymus, B-

and T-cells, and may participate in regulating lineage-specific gene expression through the formation of heterodimers with other bHLH E-proteins. Several alternatively spliced transcript variants of this gene have been described, but the full-length nature of some of these variants has not been determined. [provided by RefSeq].

TCF12 Antibody (N-term) - References

Schotte, R., et al. J. Immunol. 184(12):6670-6679(2010)
Rose, J. Phd, et al. Mol. Med. (2010) In press :
Landa, I., et al. PLoS Genet. 5 (9), E1000637 (2009) :
Gardini, A., et al. PLoS Genet. 4 (11), E1000275 (2008) :
Kumar, R., et al. J. Biol. Chem. 283(27):19026-19038(2008)